



ENGLAND

ENGINEERING LTD.

SPORTS CAR DIVISION

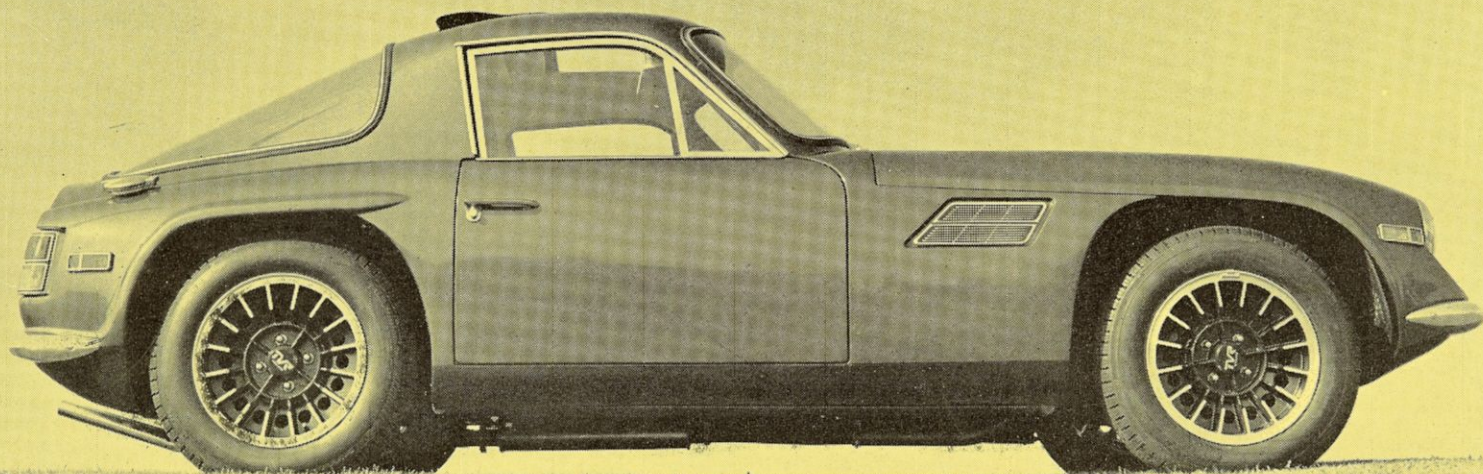
Bristol Avenue, Blackpool, England
Telephone : BLACKPOOL 56151-4

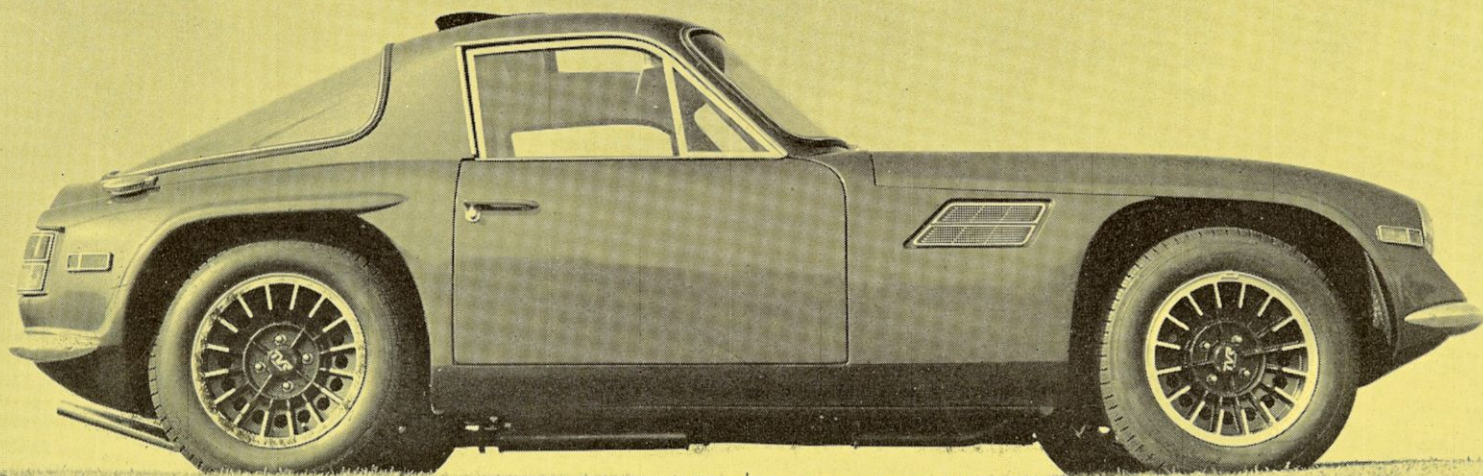
TVR VIXEN S3 - Equipment Fitted as standard

4 Cylinder Engine 84 BHP Nett 1600 CC
Twin Choke Carburetter
Four Speed all Synchromesh Gearbox
Multi-tubular Chassis with Outriggers
Independent Suspension all Round
Anti-Sway Bar
Dual Breaking System
Self Adjusting Disc Brakes
Drum Brakes on Rear
Rack and Pinion Steering
Collapsible Safety Steering Column
Safety Glass Windshield
Electric Windshield Washers
Two Speed Electric Windshield Wipers
Fresh Air Heater and Defroster
Tinted Rear Screen
Safety Padded Dash
Leather Rim Steering Wheel
Centre Console
Interior Rearview Mirror
Fully Carpeted Interior
Fully Carpeted Trunk
Ambla Interior Trim

Seat Belts
Aluminium Alloy Super Sport
5½ x 15 Wheels
Radial Ply 165 x 15 Tyres
Spare Wheel and Tyre
Jack and Wheelbrace
Interior Light
Cigar Lighter
Twin Sun Visors
Separate Adjustable Competition Seats
Sealed Beam Headlights
Dash Panel Lights
Headlamp Flasher
Hazard Warning Lights
Flashing Directional Lights
Speedometer
Tachometer
Ammeter
Oil Pressure Gauge
Water Temperature Gauge
Fuel Gauge
12 Gallon Fuel Tank
Anti-Theft Device

TVR Engineering Ltd. reserves the right to vary ex-works prices
and specifications of all products manufactured by them at any time.





ENGINE: Four cylinder 1599 c.c. bore 80.97 mm. stroke 76.6 mm. developing 92 bhp at 5500 r.p.m. compression ratio 9.0 to 1, overhead valves, single compound twin choke carburettor with air silencer, mechanical fuel pump, thermostatically heat controlled water circulation.

PERFORMANCE: 0-30 m.p.h. 3.4 secs., 0-50 m.p.h. 7.1 secs., 0-70 m.p.h. 12.8 secs. approx. Standing quarter mile 17 secs. Top speed 114 m.p.h. approx.

GEARBOX: Four forward speeds in all synchromesh gearbox providing ratios of 3.89, 5.450, 7.839 and 11.50 to 1 and reverse 12.963 to 1.

FINAL DRIVE: Chassis mounted differential hypoid level spline drive shaft to wheels, 3.89 to 1 ratio 18.8 m.p.h. per 1000 revs.

SUSPENSION: Independent suspension all round by wishbones and telescopic coil spring/damper units. Anti roll bar to front.

BRAKES: Servo assisted dual braking systems employing self-adjusting disc brakes at front and drum brakes at rear. Front disc dia. 10½" rear drum 9" x 1½". Emergency warning device on each separate system also hand brake warning light.

CHASSIS: Multi-tubular backbone constructed from steel tubing with outriggers.

WHEELS: Aluminium alloy Super Sport 5½ x 15 wheels.

DIMENSIONS:

Overall length	145 ins.	3683 mm.
Overall width	64 ins.	1625 mm.
Overall height	48 ins.	1219 mm.
Wheelbase	90 ins.	2296 mm.
Track front	53 ins.	1346 mm.
Track rear	54 ins.	1371 mm.
Ground clearance	5 ins.	127 mm.
Turning circle	27 ft.	8.23 m.
Headroom from seat cushion	34 ins.	863 mm.
Seat adjustment	8 ins.	203 mm.

UPHOLSTERY: Ambla, separate adjustable competition type seats

LUGGAGE ACCOMMODATION: On flat floor section behind seats. Lidded above compartment.

OPTIONAL EXTRAS: Non standard colour, radio, suppression kit and aerial, laminated windscreen, laminated tinted windscreen, tinted side windows, Stereo.

