

Section O - Fuel System

N.B. Fuel System part numbers begin with (L)

Downloaded free from the TVRCC website, not to be sold for commercial gain.

contents

A

Fuel Pump

B

Fuel Filter MKII

Downloaded free from the TVRCC website, not to be sold for commercial gain.

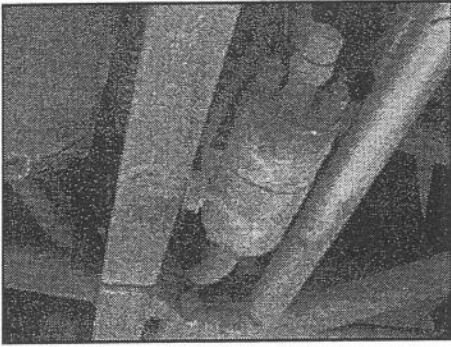


Service / Workshop Manual

Fuel Pump - Removal and Replacement

Downloaded free from the TVRCC website, not to be sold for commercial gain.

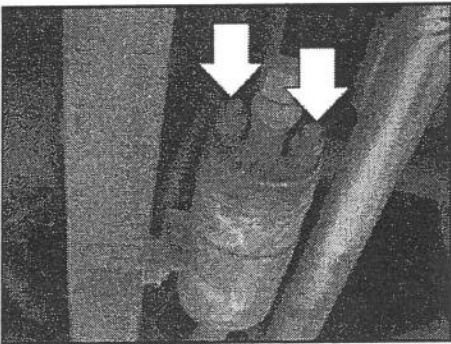
Fuel Pump - Removal/Replacement Procedure



1

Service/Workshop Manual - Fuel Pump

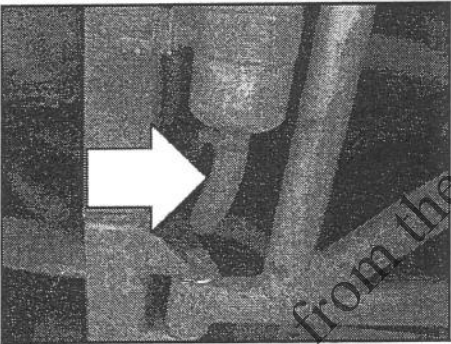
The fuel pump is located on the rear N/S of chassis.



2

Service/Workshop Manual - Fuel Pump

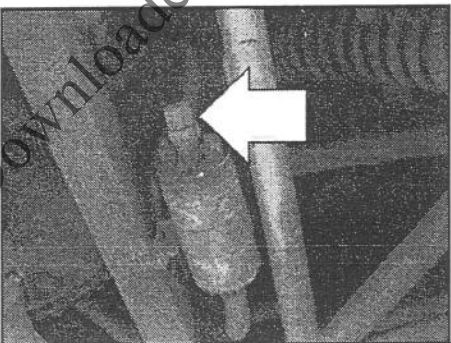
Remove the positive and negative connecting wires.



3

Service/Workshop Manual - Fuel Pump

Next clamp the fuel pipe to fuel pump rubber hose.



4

Service/Workshop Manual - Fuel Pump

Next remove the banjo nut from the same end and slide off the hose fitting. Discarding the copper washer.
N.B.- some petrol will leak out.

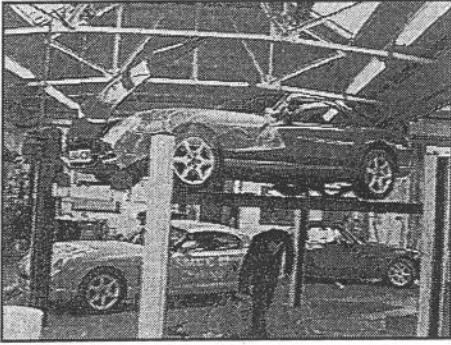


Service / Workshop Manual

Fuel Filter MKII 8/97 ONWARDS

Downloaded free from the TVRCC website, not to be sold for commercial gain.

Fuel Filter MKII- Removal/Replacement Procedure

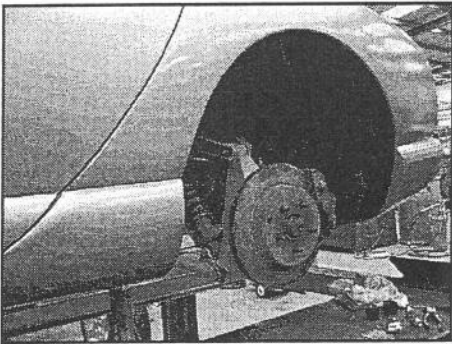


1

Service/Workshop Manual - Fuel Filter MKII

The fuel filter on the cerbera is mounted in two positions:-

- (A) Pre 8/97 cars will have a fuel filter mounted on the top of the rear of the chassis in a similar position as the Griffith and Chimaera models.
- (B) Cars made after 8/97 will have a fuel filter mounted under the N/S wheel.



2

Service/Workshop Manual - Fuel Filter MKII

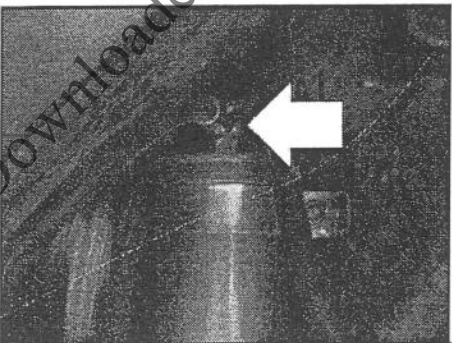
To complete the operation of changing a fuel filter a second pair of hands will be needed. Raise the car on a ramp at shoulder level. Remove the rear N/S wheel.



3

Service/Workshop Manual - Fuel Filter MKII

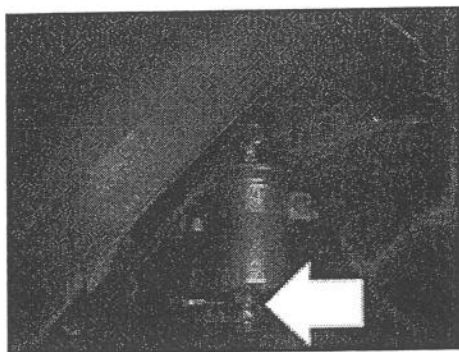
The fuel filter is located on the underside of the wheel arch.



4

Service/Workshop Manual - Fuel Filter MKII

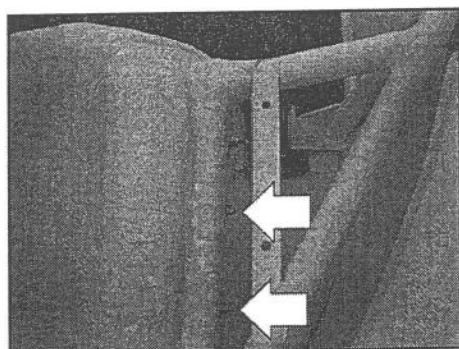
Carefully unbolt the top banjo bolt. This will de-pressurise the fuel filter and will result in some fuel spraying out.



5

Service/Workshop Manual - Fuel Filter MKII

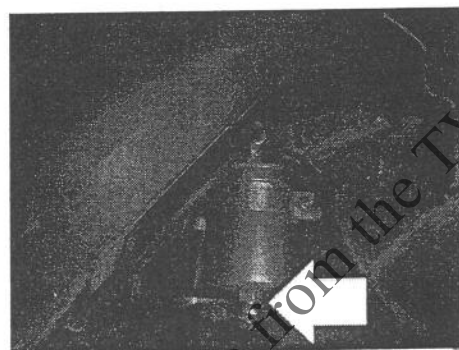
Next undo the bottom banjo bolt.



6

Service/Workshop Manual - Fuel Filter MKII

Finally to remove the filter bracket a second person will need to remove the egg panel behind the rear seats and hold the bracket nuts, as the first person removes the bolts from the other side.



7

Service/Workshop Manual - Fuel Filter MKII

To replace reverse the outlined procedure remembering to fit new cooper washers.