

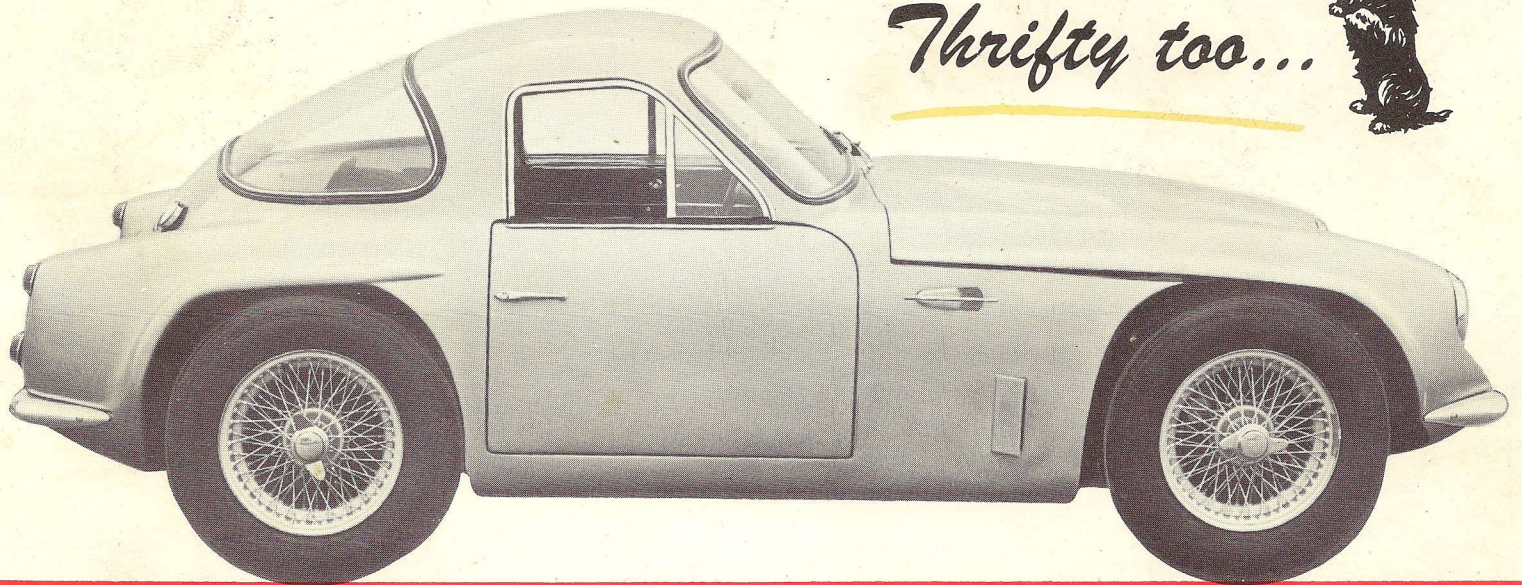
*Bonnie..*



*Brawny..*



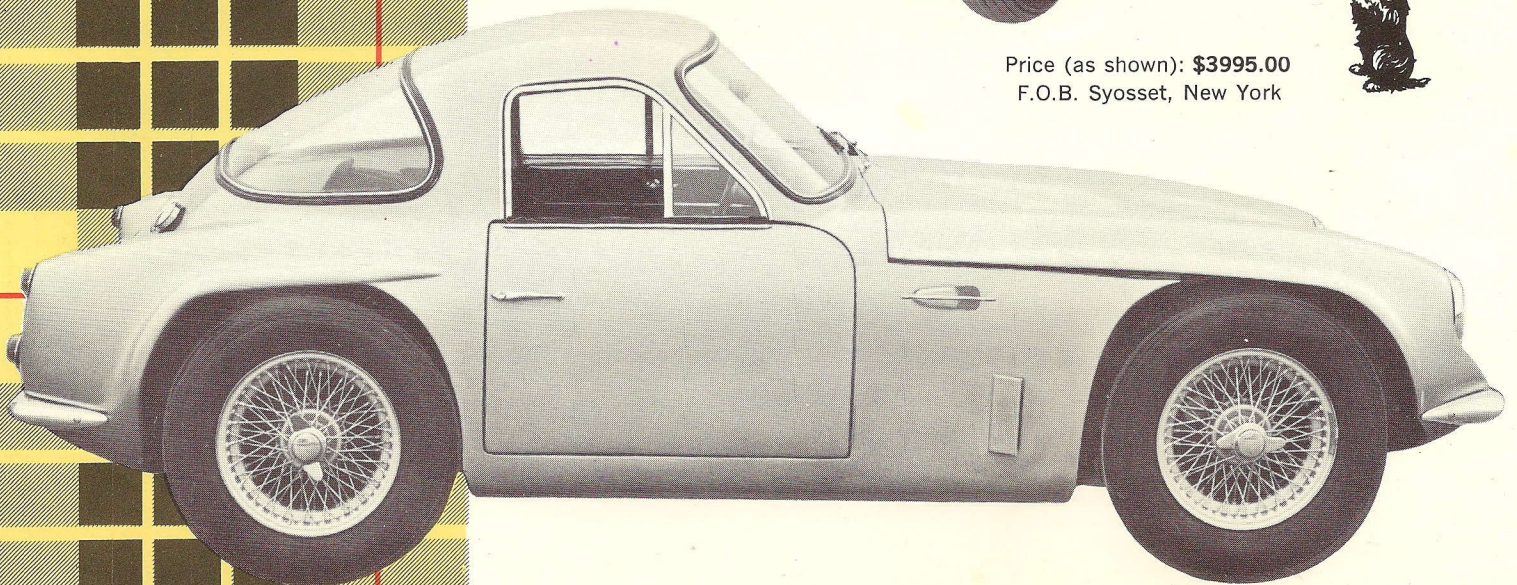
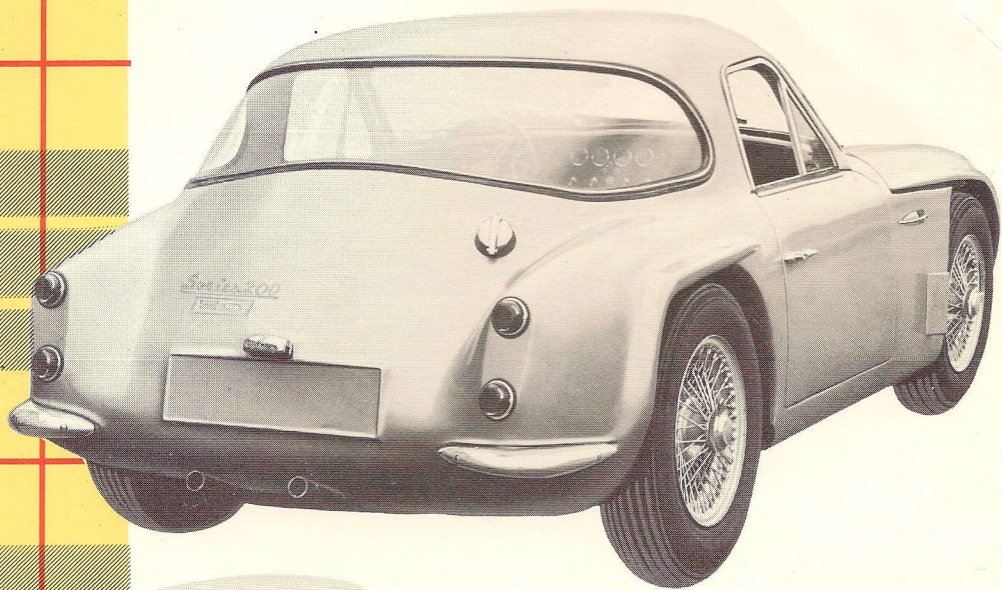
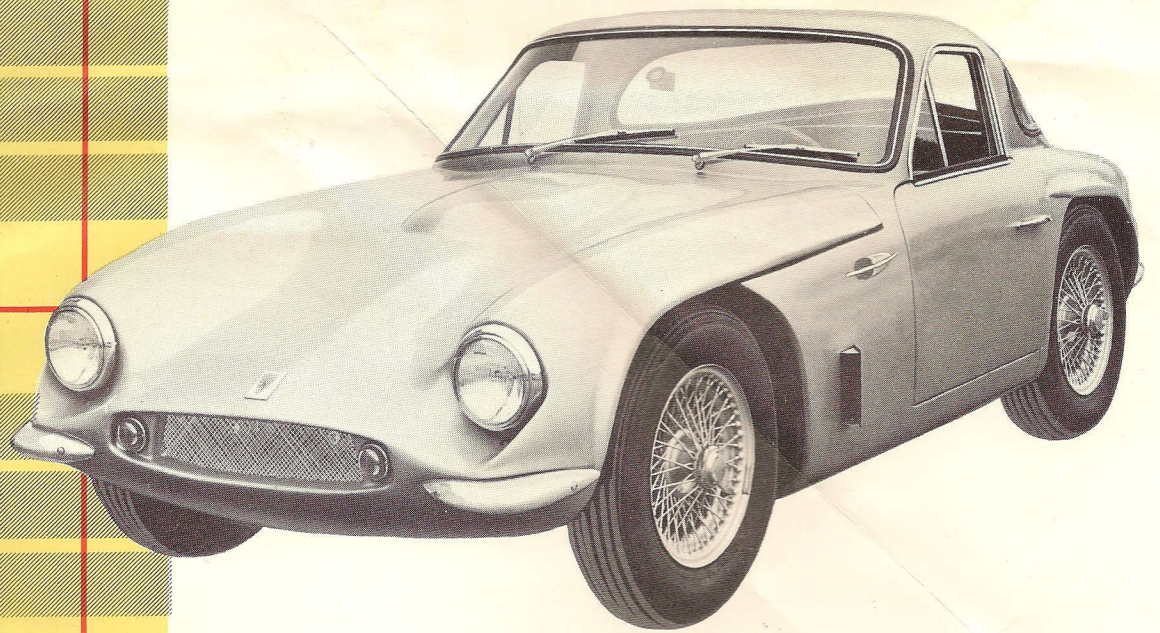
*Thrifty too...*



*presenting*

the Grrrrreat **GRIFFITH** Series 200





Price (as shown): \$3995.00  
F.O.B. Syosset, New York



GRIFFITH MOTORCAR COMPANY





## WE'RE PROUD TO PRESENT the Grrrrreat GRIFFITH Series 200

... world's fastest, most dramatic, most economical production automobile. With a standard 289 cubic inch, 195 horsepower Ford V-8 engine, the GRIFFITH Series 200 is truly the car that goes like all get-out, for those who like to get out and GO!



### SPECIFICATIONS

#### ENGINE

Type	Ford V-8
Displacement	289 cu. in. (4727 cc)
Valve Position	Overhead
Bore	4.00 in.
Stroke	2.87 in.
Max. B.H.P.	195 @ 4400 RPM (Std.)
Clutch	10½ in. dia. hydraulic
Gearbox	Ford—all synchromesh, 4-speeds and reverse

#### CHASSIS

Frame	Multi-tubular
Suspension	Independent all-round coil springs with unequal length wishbones
Brakes	Front, Girling 10¾" discs Rear, Girling drums 9"x1¾"
Dampers	Woodhead-Monroe telescopic hydraulic
Wheels	Knock-off, 72 spoke wire wheels
Tires	Dunlop SP 185x15
Steering	Rack and pinion

#### BODY

Construction	Reinforced fiberglass on multitubular frame— insulated for sound deadening
Doors	Two doors with roll-up windows
Seating	Two competition type bucket seats upholstered in high grade leather grain vinyl
Steering Wheel	15" dia., 3 spoke, wood rim competition type
Instruments	Separate rev. counter, trip speedometer, oil pressure, water temperature, ammeter and fuel gage
Fuel Tank	16 gal. (U.S.), located in rear with quick release filler

#### DIMENSIONS

Wheelbase	85½ in.
Track	Front 52½ in.    Rear 54 in.
Over-all Length	138 in.
Over-all Height	48 in.
Over-all Width	64 in.
Ground Clearance	6 in.
Curb Weight	1450 pounds dry

#### GRIFFITH FACTORY INSTALLED OPTIONS

Ford V-8 289 cu. in., 271 B.H.P., high-performance engine	\$495.00
Fresh Air Heater & Defroster	\$ 62.00
Regulation Seat Belts (both seats)	\$ 14.00
Luggage Rack (chrome)	\$ 37.00
Competition Vehicles & Related Racing & Performance Equipment	(Prices available on request)

The Griffith Series 200 is available  
in the following range of Standard Colors:

British Racing Green	*Cirrur White
Signal Red	Regal Red
Silver Blue	* Black
	Powder Blue

#### Interiors:

*Cherry Red	Finnish Black
-------------	---------------



Prices and Specifications Subject to Change without Notice.



*Ed Kraus*

AUTOLAB IMPORTS INC.  
ROUTE 128 & WASHINGTON ST.  
WOBURN, MASS.



**GRIFFITH Motorcar Company** Syosset, New York