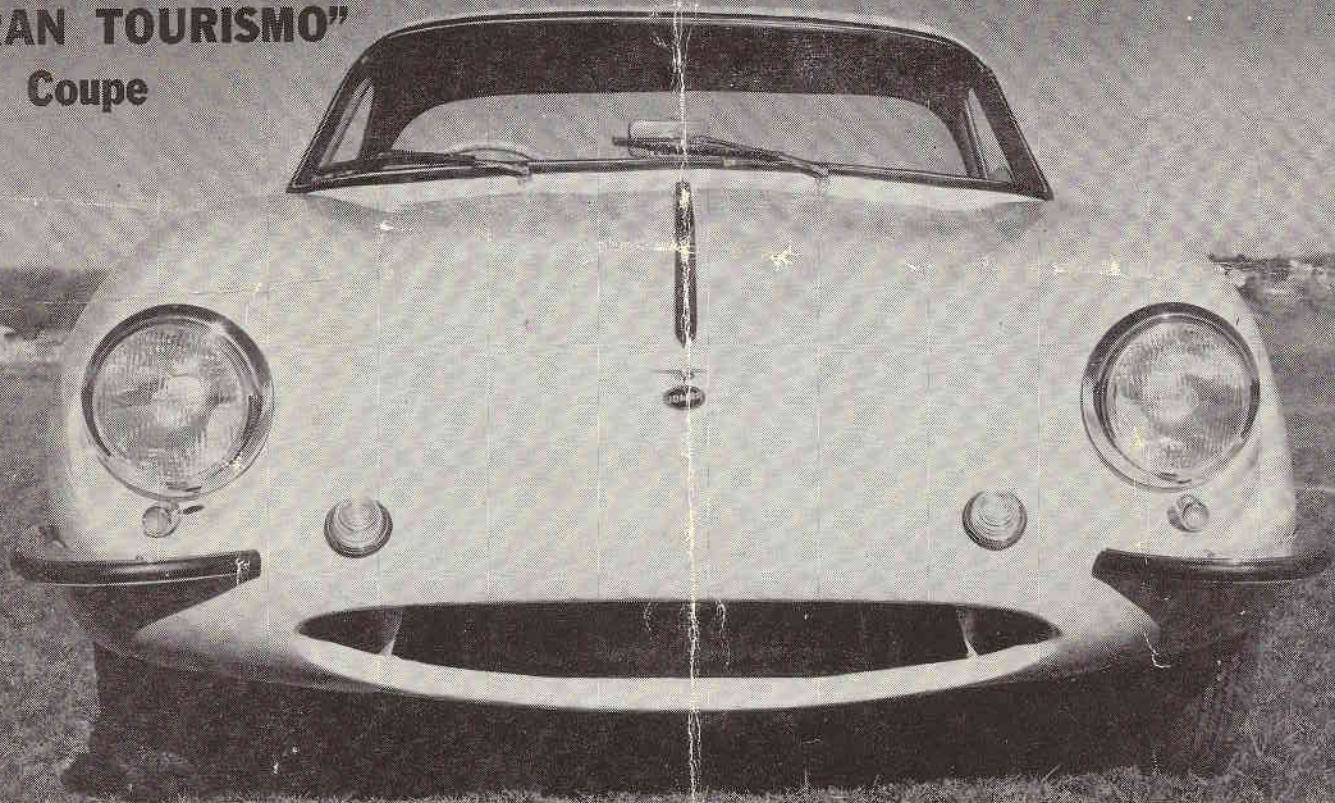


# JOMAR

**"GRAN TOURISMO"**

**Coupe**



## SPECIFICATIONS

### 1098cc "CLIMAX COUPE"

Wheelbase - 84 inches

Track - 52 inches

Suspension - Torsion Bars and Trailing Arms

Transmission - 4 speed box - Open propeller shaft to differential - Universal jointed half shafts.

Rear axle ratio optional 4.1, 4.7, 5.1, or 5.2

Tire Size - 5.00 x 15

Engine - 1098cc Coventry Climax 4 cyl. "Stage 2".

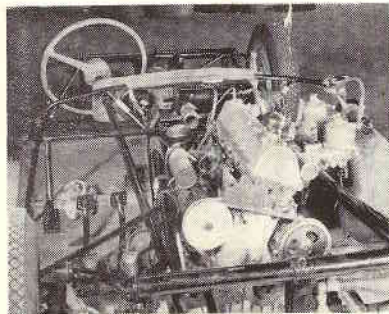
BHP - 85 at 7000 RPM

Weight - approx. 1400 lbs.

Brakes - Girling Hydraulic internal expanding with 2 leading shoes front. Drums are 11" in diameter by 2 1/4" wide.

Electrical equipment - 12 Volt Lucas System

All Touring Jomars come with tachometer, ammeter, speedometer, oil pressure and water temperature gauges as standard equipment. Seal beams, turn signals, ash tray and air foam cushions are also supplied at no extra charge. An extremely high standard of exterior and interior finish is maintained.



### 1172cc "SUPERCHARGED COUPE"

Wheelbase - 84 inches

Track - 52 inches

Suspension - Torsion Bars and Trailing Arms

Transmission - 3 speed box (optional close ratio) - open propeller shaft to differential - Universal jointed half shafts.

Rear axle ratio optional 4.1, 4.7, 5.1, or 5.2

Tire Size - 5.00 x 15

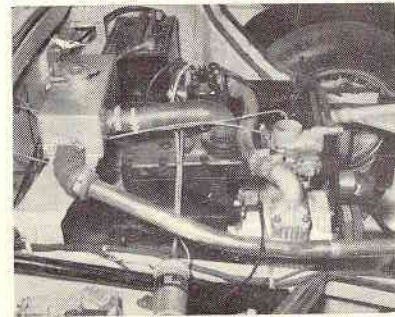
Engine - Shorrock Supercharged 1172cc 4 cyl.

BHP - 61 at 4500 RPM

Weight - approx. 1400 lbs.

Brakes - Girling Hydraulic internal expanding with 2 leading shoes front. Drums are 11" in diameter by 2 1/4" wide.

Electrical equipment - 12 Volt Lucas System



## SAIDEL Sports-Racing Cars

Division of Merrimack St. Garage, Inc.

*Builders of Jomar Racing Types*

USA distributors of JOMAR Coupes and Roadsters

40-56 Merrimack St.

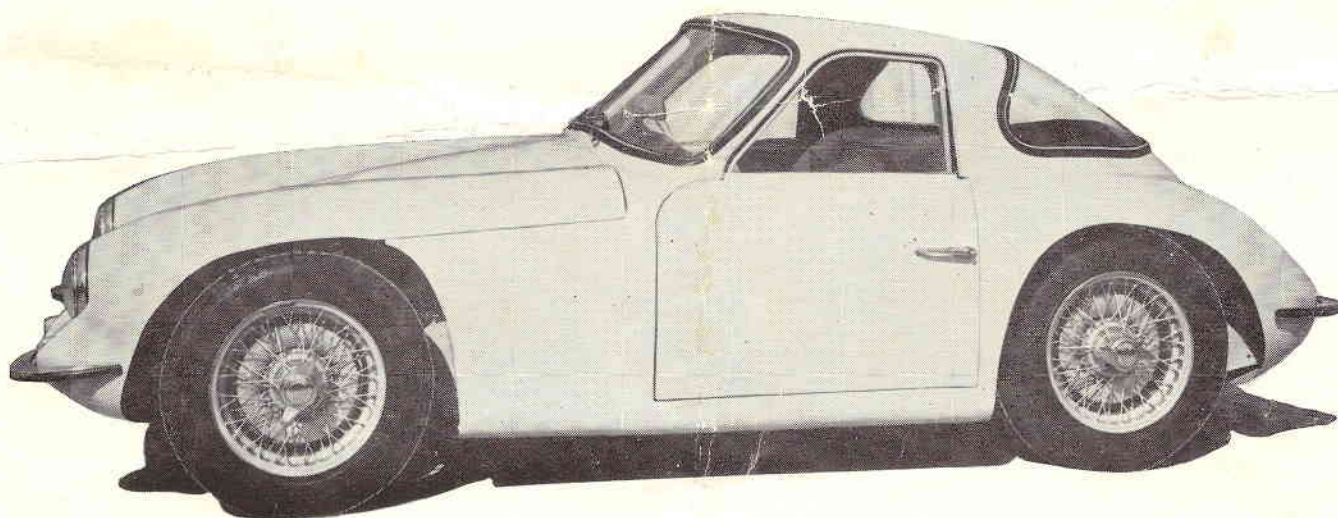
Tel. NA 3-8015

Manchester, New Hampshire      Cable address: Merrimack



A true race bred touring car, the JOMAR COUPE uses the same rugged chassis as the successful JOMAR MK 2 Sports Racing cars. This gives an extreme amount of strength and reliability coupled with light weight. The cornering and road holding characteristics are superb and absolutely unequalled by any other machine on the road today. Steering is quick and precise allowing the owner the delights of a racing machine with the comforts of a road car. Acceleration is very rapid with top speeds up to 135 MPH. The brakes would be considered excellent on a machine of more than twice the JOMAR's weight and therefore provide a very wide margin of safety.

The JOMAR COUPE is a joint Anglo-American project of TVR Engineering of Blackpool, England and SAIDEL SPORTS RACING CARS of Manchester, New Hampshire.



### JOMAR TOURING MODELS

JOMAR COUPE with disc wheels, 1172cc engine, leatherette upholstery .....	\$2995.00
JOMAR "GRAN TOURISMO COUPE" with wire "knockoff wheels", 1172cc "SUPERCHARGED" engine, leatherette upholstery .....	3495.00
JOMAR "CLIMAX COUPE" with stage 2 1098cc COVENTRY CLIMAX engine, wire wheels, al-fin drums, four speed gearbox .....	4195.00
JOMAR 1172cc ROADSTER . . . with disc wheels, 1172cc engine, leatherette upholstery, etc. ....	2895.00
JOMAR 1172cc SUPERCHARGED ROADSTER with wire wheels, close ratio gearbox, al-fin drums, leatherette interior, etc. ....	3395.00
JOMAR "CLIMAX ROADSTER" with stage 2 1098cc COVENTRY CLIMAX engine, wire wheels, al-fin drums, four speed gearbox, etc. ....	4095.00
Special Close Ratio Gears for use with 1172cc powered cars .....	75.00
Heater and Defroster .....	65.00

### JOMAR SPORTS-RACING MODELS

JOMAR MK 2 with stage 2 1098cc COVENTRY CLIMAX engine, four speed gearbox, fiberglass body, headrest, tonneau cover etc. ....	\$3995.00
JOMAR MK 2 Aluminum bodied car with stage 2 1098cc COVENTRY CLIMAX engine, four speed gearbox, headrest, etc. ....	4595.00

(All prices subject to change without prior notice. Retail price suggested only and does not include dealers charge for transportation or preparation. Such charges being up to the individual dealer depending upon his location and pricing policies.)

Prices effective April 16th, 1958, FOB Manchester, N. H. USA