



JOMAR COUPE

Four Wheel Independent Suspension by
Torsion Bars and Trailing Arms.
Five Optional Rear Axle Ratios.



Luxurious Interiors
Roll Up Windows
Large Curved Windshield
Extra Large Rear Window
Comfortable Bucket Seats
Locking Doors & Trunk

SAIDEL SPORTS RACING CARS

a division of

MERRIMACK STREET GARAGE INC.

40-52-56 Merrimack Street
Telephone: NAtional 3-8015

Manchester, N. H.
Cable: Merrimack

Also authorized dealers for:

M.G., AUSTIN, MORRIS, AUSTIN HEALEY, HILLMAN, SUNBEAM, JAGUAR, TRIUMPH TR3,
PANHARD, CITROEN, BORGWARD, FIAT, SAAB, DKW, MORGAN, ALFA ROMEO, ROVER,
ISETTA, VESPA and OLDSMOBILE

Specializing in Sports and Race car preparation and service. Complete body shop.

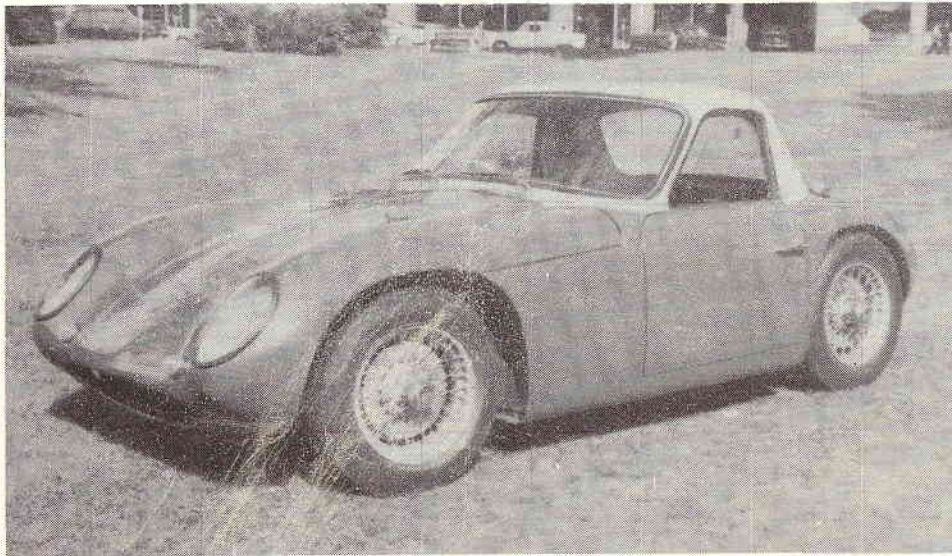
T.V.R. - JOMAR LTD.

and

SAIDEL SPORTS RACING CARS

Introduce the 1958

JOMAR COUPE



A true race bred touring car, the JOMAR COUPE uses the same rugged chassis as the successful JOMAR MK 2 Sports-Racing cars. This gives an extreme amount of strength and reliability coupled with light weight. The cornering and road holding characteristics are superb and absolutely unequaled by any other machine on the road today. Steering is quick and precise allowing the owner the delights of a racing machine with the comforts of a road car. Acceleration is very rapid with a top speed of well over 120 MPH. The brakes would be considered excellent on a machine of more than twice the JOMAR's weight and therefore provide a very wide margin of safety.

The JOMAR COUPE is the result of a joint Anglo-American project. The firm of T.V.R. Engineering of Blackpool, England is responsible for the basic designing and building of the JOMAR chassis upon which in 1956 and 1957 Saidel Sports-Racing Cars of Manchester, N. H., using aluminum bodies of their own design carried out extensive racing research and development. Through the efforts of both concerns the successful MK 2 model was evolved. At the same time in Blackpool, the fiberglass coupe was being created by Trevor Wilkinson, Bernard Williams and their associates. The program for the future provides for aluminum bodied racing models to be built in Manchester, and fiberglass touring models to be built in England. United States distribution is to be handled by Saidel Sports-Racing Cars while distribution in England and on the continent will be under T.V.R.-JOMAR LTD.

Prices delivered in Manchester, N. H., are as follows:

JOMAR COUPE . . . \$2950.00 complete with disc wheels, 1172cc reliable, economical, 100E engine; directional signals, courtesy lamps, dual windshield wipers, oil filter, tachometer, etc.

JOMAR G.T. COUPE . . . \$3495.00 equipped with knock-off wire wheels, special SUPERCHARGED 1172 engine (a custom installation by Shorrock Superchargers Ltd.), Dunlop full racing tires, directional signals, courtesy lamps, dual windshield wipers, oil filter, tachometer, cigar lighter, etc.

JOMAR "CLIMAX COUPE" . . . \$4195.00 equipped with Stage 2 Coventry Climax 1098 cc engine, four speed gearbox, knock-off wire wheels, Alfin alloy brake drums, Dunlop full racing tires, etc.
Single or Double Overhead Cam 1500cc Climax Coupes are available on special order.

SAIDEL SPORTS-RACING CARS . . . A division of MERRIMACK STREET GARAGE, INC.

40-56 Merrimack Street, Manchester, N. H.

Tel.: NATIONAL 3-8015 Cable: Merrimack