

GENERAL CHASSIS SPECIFICATIONS.

SUSPENSION SETTING DATA.

ALL MODELS.

TRACK      FRONT:    Toe in  $0^{\circ}$  30' (1/8")  
                 REAR :    Toe in  $0^{\circ}$  15' (1/16")

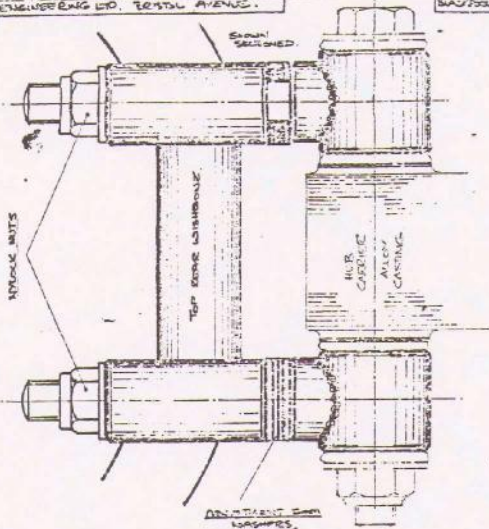
CAMBER.    FRONT:    Vertical to  $0^{\circ}$  - 30' neg.  
                 REAR       $0^{\circ}$  - 30' to  $1^{\circ}$  - 0' neg.

OVERALL SQUARENESS: Tolerance 0.25"

TYRE PRESSURES:

	<u>Front</u>	<u>Rear.</u>
161 M )	22 lb/sq."	24 lb/sq"
250 M )		
300 M )	24 lb/sq."	26 lb/sq."
TURBO )		

-----



TVR SPORTS CARS

M SERIES MODELS

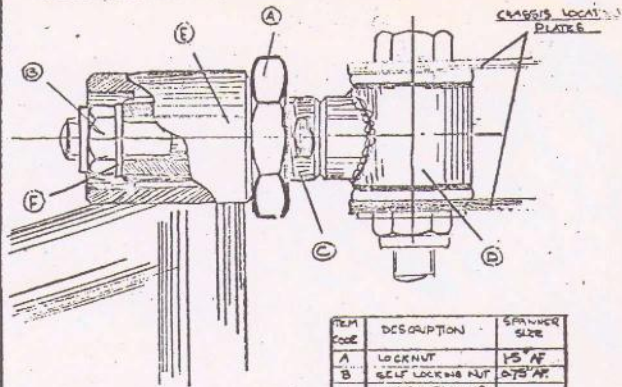
REAR CAMBER ADJUSTMENT.

PROCEDURE :-

SLACKEN BOTH NYLOCK NUTS, IF CAMBER MISOFFICENT REMOVE WASHERS TO OBTAIN THE CORRECT SETTINGS. IF CAMBER TO SEVERE FIT EXTRA WASHERS.

NB: ALWAYS ENSURE THAT BOTH ADJUSTERS ON SAME SIDE HAVE IDENTICAL THICKNESS OF SHIMS.

RECOMMENDED REAR CAMBER SETTINGS BETWEEN  $0^{\circ}$ - $20'$   
AND  $1^{\circ}$ - $0'$   
NEGATIVE.



TVR SPORTS CARS  
M SERIES MODELS

REAR WHEEL TOE IN

ITEM CODE	DESCRIPTION	SPANNER SIZE
A	LOCKNUT	15" AF
B	SELF LOCKING NUT	10.5" AF
C	ADJUSTER COLLAR	
D	SLEEVE/BUSH HOLDER	
E	WISHBONE BUSH	
F	PLAIN WASHER	

PROCEDURE 2

SLACKEN LOCKNUTS 'A' AND 'B'.  
USING A 3/4" AF THIN OPEN END SPANNER TURN 'C'.  
THIS WILL MOVE THE WISHBONE IN OR OUT RELATIVE TO  
THE  $\frac{1}{2}$ " OF THE CAR.

WHEN TRACK & TOE IN IS SET CORRECTLY AND  
OVERALL SQUARENESS TO FRONT WHEELS IS ALSO  
CHECKED, LOCK FIRSTLY NUT 'B' AND THEN  
NUT 'A'.

NB. LOCKNUT 'B' ONLY REQUIRES MINIMAL  
UNTIGHTENING OTHERWISE TRACK READINGS WILL NOT BE  
CORRECT AFTER FINAL TIGHTENING.

RECOMMENDED REAR TOE IN SETTING BETWEEN  $0^{\circ}-10^{\circ}$   
AND  $0^{\circ}-20^{\circ}$

OVERALL SQUARENESS  $\pm 0.25$  INCHES ( $\pm 6$  MM) MEASURED  
AT  $\frac{1}{2}$ " OF FRONT WHEELS.