

TVR

ENGLAND

ENGINEERING LTD.

SPORTS CAR DIVISION

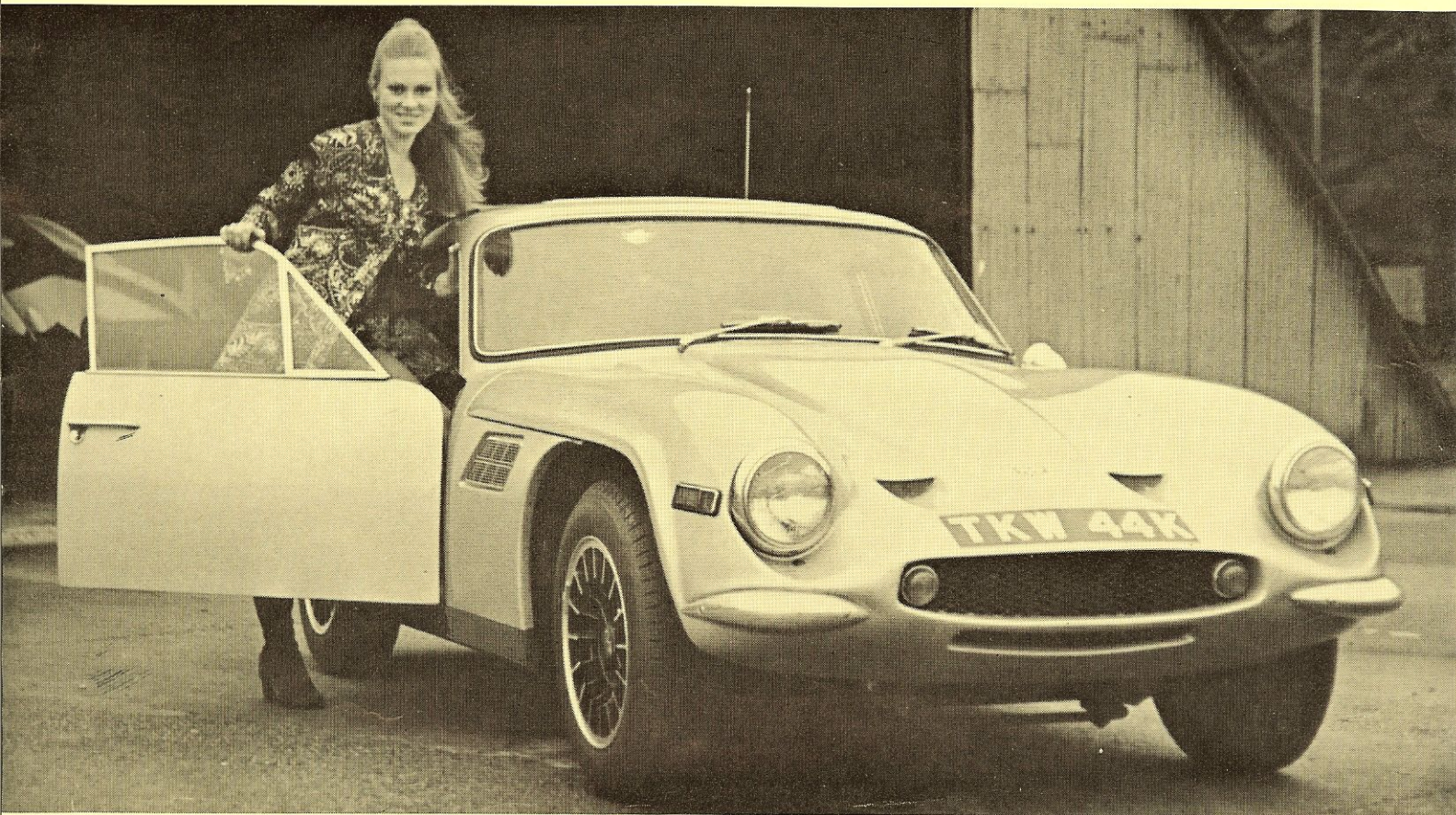
Bristol Avenue, Blackpool, England
Telephone : BLACKPOOL 56151-4

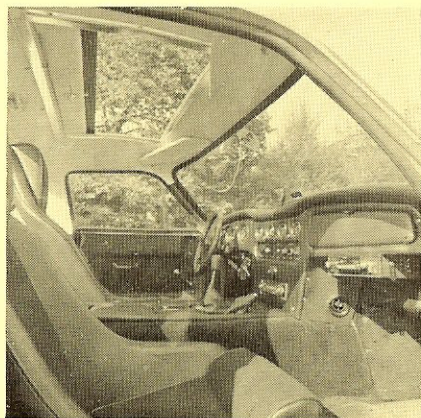
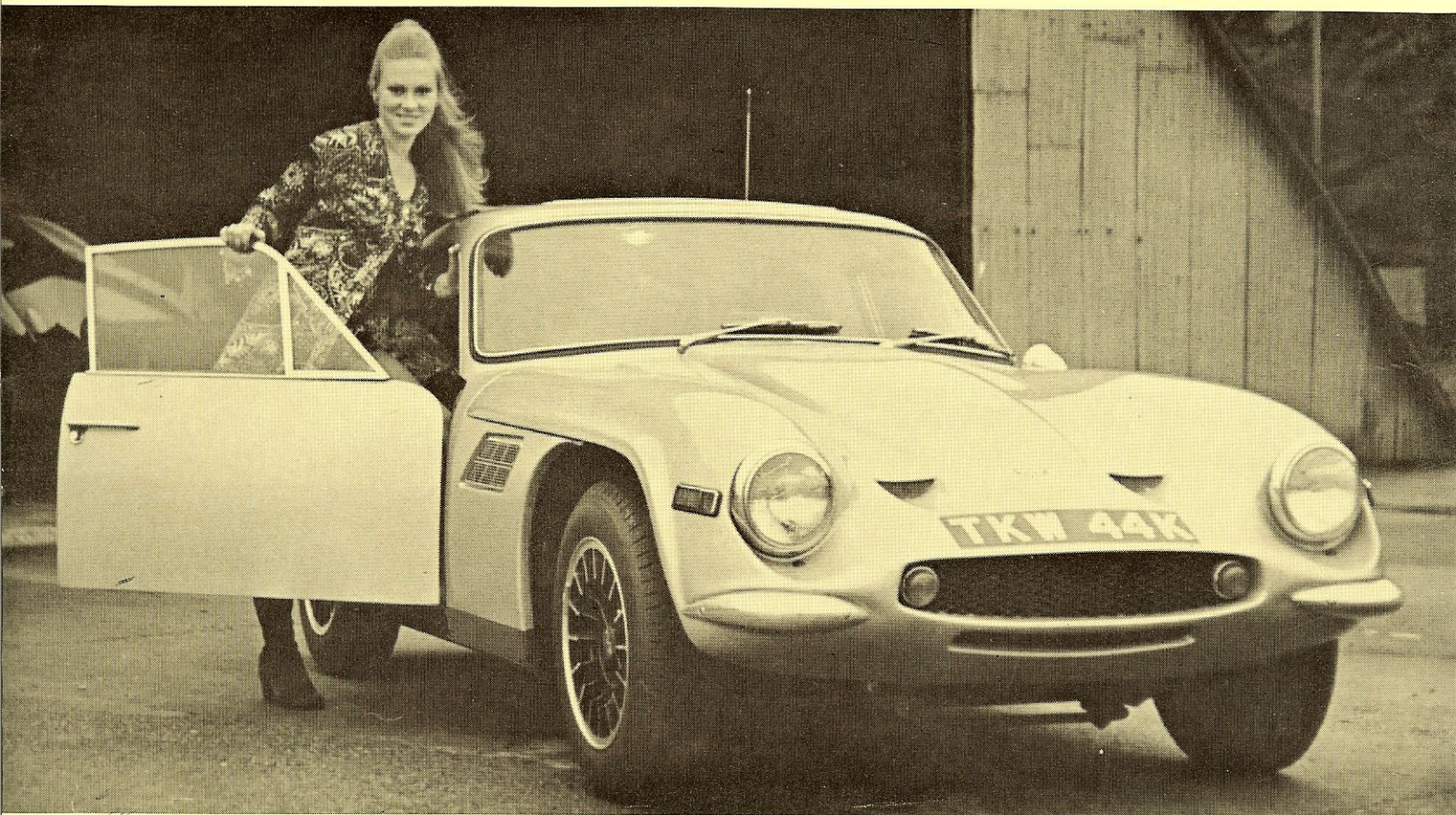
TVR 1300 - Equipment Fitted as standard

Twin Carburettors
Four Speed all Synchromesh Gearbox
Multi-tubular Chassis with Outriggers
Independent Suspension all Round
Anti-Sway Bar
Self Adjusting Disc Brakes
Drum Brakes on Rear
Rack and Pinion Steering
Collapsible Safety Steering Column
Safety Glass Windshield
Electric Windshield Washers
Two Speed Electric Windshield Wipers
Fresh Air Heater and Defroster
Tinted Rear Screen
Safety Padded Dash
Leather Rim Steering Wheel
Centre Console
Interior Rearview Mirror
Fully Carpeted Interior
Fully Carpeted Trunk
Ambla Interior Trim
Seat Belts

Aluminium Alloy Super Sport
5½ x 15 Wheels
Radial Ply 165 x 15 Tyres
Spare Wheel and Tyre
Jack and Wheelbrace
Interior Light
Cigar Lighter
Twin Sun Visors
Separate Adjustable Competition Seats
Sealed Beam Headlights
Dash Panel Lights
Headlamp Flasher
Hazard Warning Lights
Flashing Directional Lights
Speedometer
Tachometer
Ammeter
Oil Pressure Gauge
Water Temperature Gauge
Fuel Gauge
12 Gallon Fuel Tank
Anti-Theft Device

TVR Engineering Ltd. reserves the right to vary ex-works prices and specifications of all products manufactured by them at any time.





ENGINE

Number of cylinders	4	
Bore of cylinders	73.7 mm.	2.9 in.
Stroke of crank	76.0 mm.	2.992 in.
Piston area	171 sq.cm.	26.5 sq. in.
Capacity	1296 cc.	79.2 cu. in.
Compression ratio	9.0 : 1	
Maximum Power	63 bhp nett @ 6000 rpm.	
Maximum Torque	837 lb. in. @ 3500 rpm	

MAXIMUM SPEED

100 m.p.h. depending on conditions.

PERFORMANCE

Acceleration	Speed range	Time
Top gear	30-50 m.p.h.	10.5 secs.
Top gear	40-60 m.p.h.	10 secs.
Through gears	0-50 m.p.h.	9.0 secs.
Through gears	0-60 m.p.h.	12.5 secs.

TRANSMISSION

Clutch : 6½ ins. dia. (165mm.) single dry plate diaphragm spring type. Hydraulically operated release mechanism.

Gearbox : 4 forward ratios and 1 reverse. Syncromesh on all forward ratios. Silent helical gears. Remote control gear lever centrally mounted behind gearbox.

	Top	3rd	2nd	1st	Rev.
Gearbox ratios	1	1.39	2.16	3.50	3.99
Rear axle ratio	4.11 : 1				

