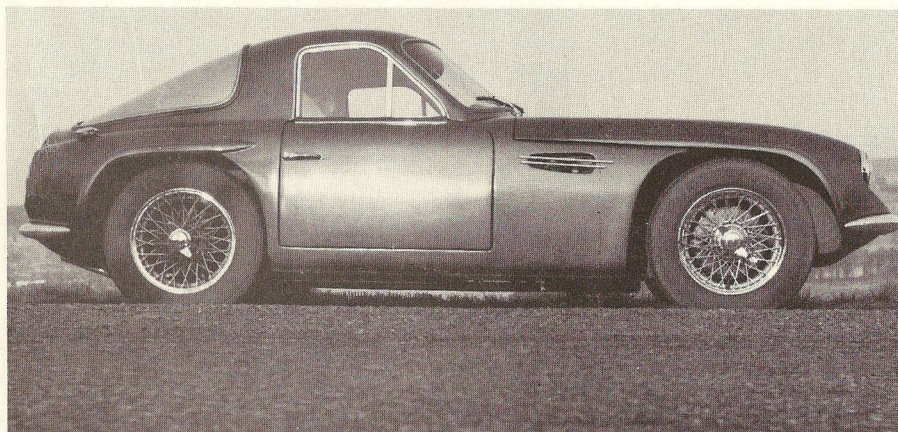
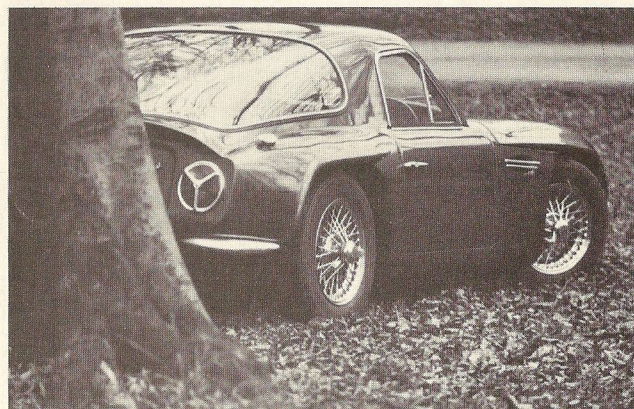


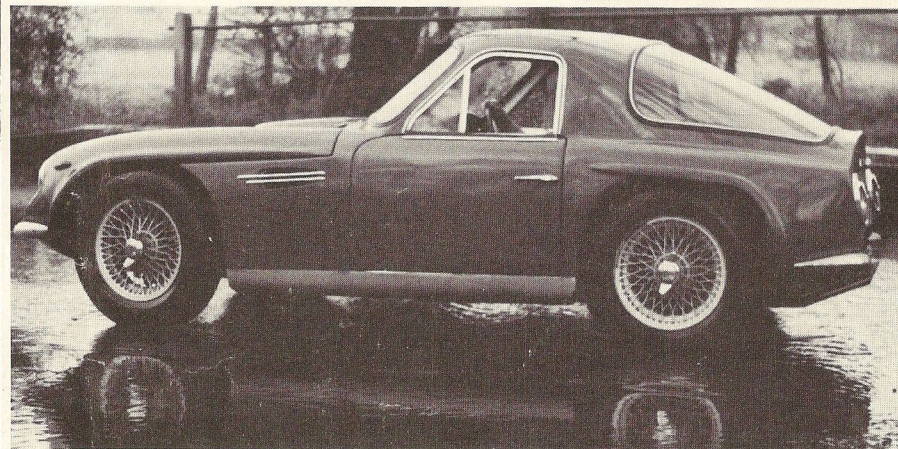
TVR



**TUSCAN
V8**

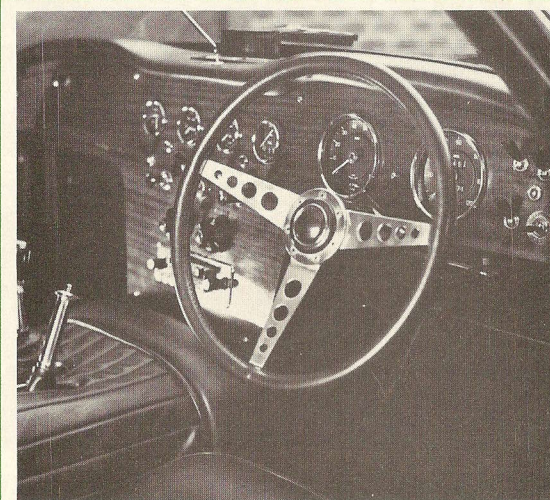
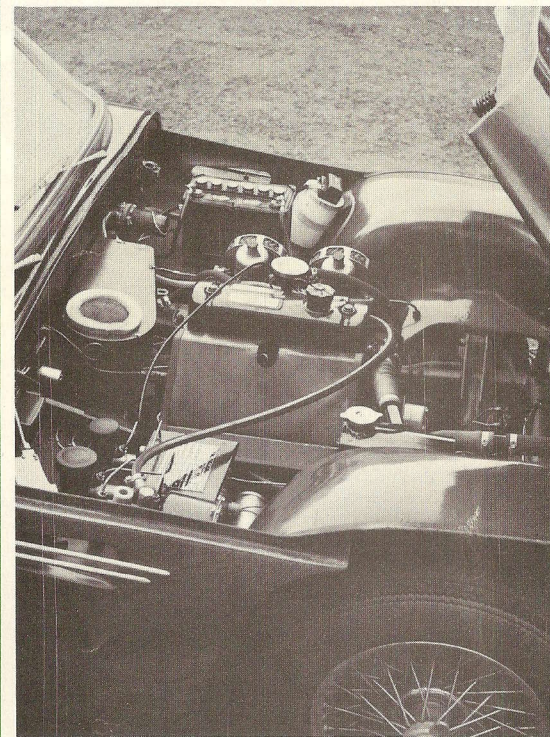
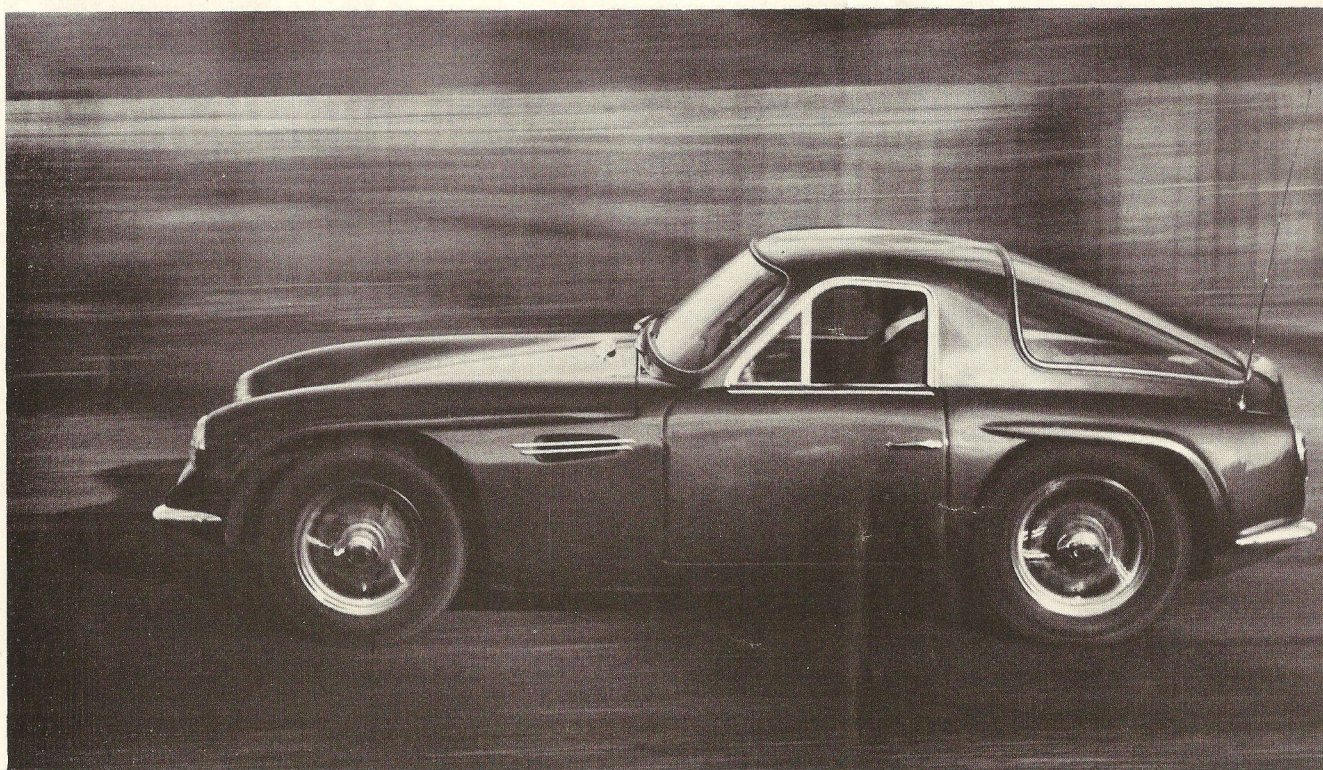


**MK IV
1800S**



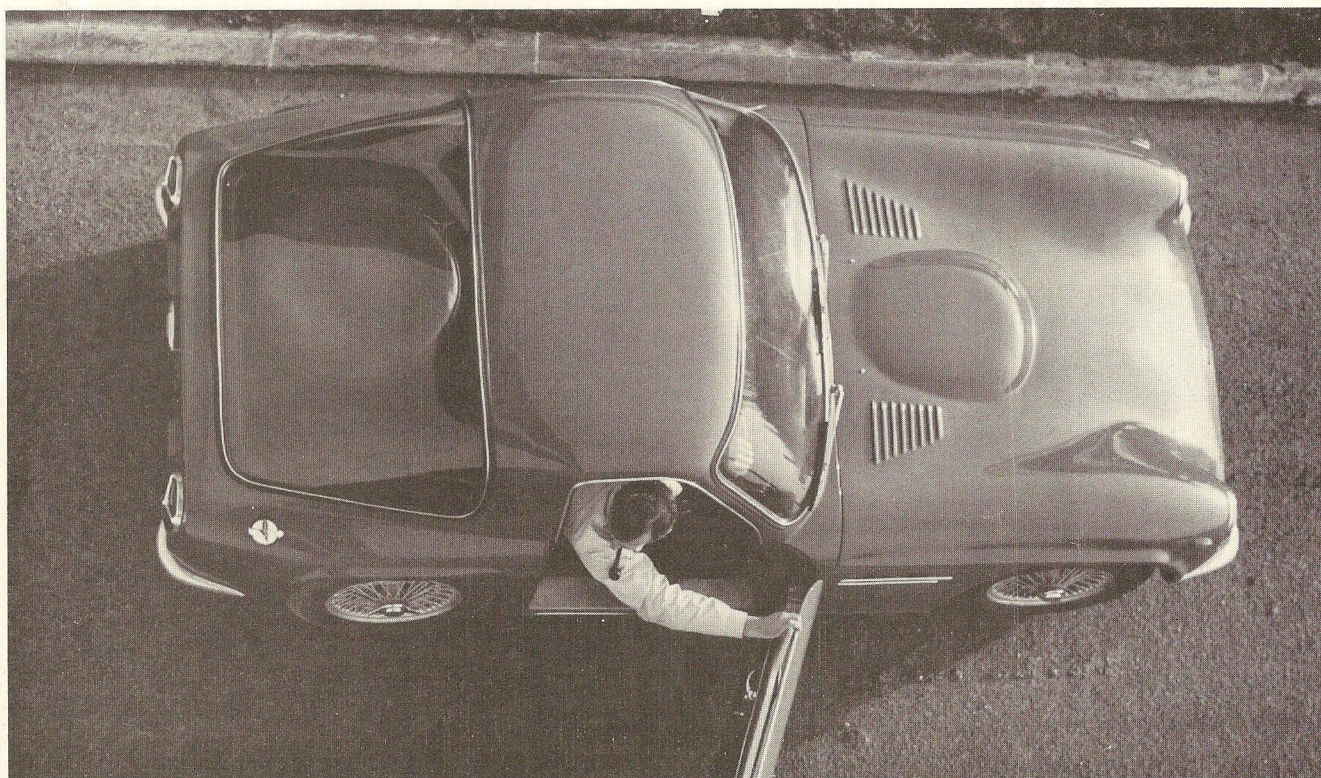
TVR MK IV 1800 S

Powered by the proved reliability of the MGB 1798 c.c. engine which produces 98 b.h.p. at 5,400 r.p.m. Top speed is 120 m.p.h. with a fuel consumption of 30 m.p.g. The 1800 leaps from 0-60 m.p.h. in 9.2 seconds.



TVR TUSCAN V8

Powered by the Ford V8 4.7 litre engine which produces 200 b.h.p. at 6,000 r.p.m. Top speed of the Tuscan is 130 m.p.h. with a fuel consumption of 24 m.p.g. The Tuscan's effortless energy is capable of achieving 0-60 m.p.h. in only 5 seconds. (An optional extra will be a modified version of the V8 engine with a higher compression ratio, which will produce 271 b.h.p. at 6,000 r.p.m. Top speed of this car will exceed 160 m.p.h.)



SPECIFICATION: TVR MK IV 1800S

BODY Two door, two seater, G.T. Coachwork in glass reinforced plastic. Curved screen. Forward hinged doors. Winding windows.

UPHOLSTERY Ambla. Separate adjustable competition type bucket seats.

GENERAL EQUIPMENT Driving mirror, ash tray, safety harness attachments, self-parking electric screen wipers, electric screen washer, twin wind tone horns. Cast aluminium quarter bumpers. Chromium plated nave plates. Tool-roll, wheel brace and jack. Spare wheel and tyre. Twelve volt battery. Fully carpeted. Padded sun visors.

LIGHTS Flush fitting sealed beam with pre-focus headlamps. Separate parking lamps and direction indicator flashers. Rear lamps, braking lamps and reflectors in trisected circular form. Number plate lamp and reversing lamp.

INSTRUMENTS Speedometer, tachometer, temperature gauge, oil pressure gauge, fuel gauge and ammeter. Warning lights for main headlamps beam, ignition and direction indicators.

CONTROLS. Three spoke wood rim steering wheel (rack and pinion). Ignition lock, choke pull, screen washer switch and electric cooling fan switch on central

facia below instruments. Lighting master switch and screen wiper switch on facia adjacent to driver's right hand. Headlamp beam selection by steering column switch with daylight flasher switch. Self cancelling direction indicator control by steering column lever. Horn button on steering wheel boss.

LUGGAGE ACCOMMODATION On flat floor section behind seats. Lidded glove compartment.

DIMENSIONS

Length	11' 6"	3,590 m.m.
Width	5' 4"	1,625 m.m.
Height (unladen)	4'	1,220 m.m.
Wheel base	7' 1½"	2,220 m.m.
Track front	4' 4½"	1,360 m.m.
Track rear	4' 5½"	1,390 m.m.
Ground clearance	5"	125 m.m.
Turning circle	32'	9.8 m.
Head room from seat cushion	2' 10½"	836 m.m.

CAPACITIES

Fuel tank	15 galls. imp.	68 litres
Engine	6.8 pts. imp.	3.9 litres

Gear box	4.5 pts. imp.	2.55 litres
Rear axle	1.75 pts. imp.	
Cooling system (with heater)	8 pts. imp.	

KERB WEIGHT 16 cwt.

CHASSIS Multitubular back bone constructed from steel tubing with outriggers.

ENGINE Four cylinder, 1,798 c.c., bore 80.3 m.m., stroke 88.9 m.m. Compression ratio 8.8. Aluminium alloy pistons. Push-rod operated overhead valves. Five bearing crankshaft, lead indium bearings. Electric fan. Full-flow oil filter. Twin S.U. carburettors. Diaphragm type hydraulic clutch.

GEARBOX Four forward speeds and reverse, synchromesh on second, third and fourth (top).

ratios	Top	3rd	2nd	1st	Reverse
	1	1.37	2.21	3.64	4.75

Overall

ratios	3.91	5.36	8.64	14.23	18.57
--------	------	------	------	-------	-------

Final drive Chassis mounted differential hypoid bevel spline drive shaft to wheels.

SUSPENSION Independent suspension all round by wish bones and telescopic coil spring/damper units. Anti roll bar to front.

BRAKES Front: 10" diameter discs. Rear: Drum brakes 9" x 1½" one leading, one trailing. Pedal operates all brakes hydraulically, hand brake operates rear brakes mechanically.

WHEELS Steel disc with chromium plated nave plates, 5.90 x 15" tyres.

ACCELERATION 0-60 m.p.h.: 9.2 secs. Maximum speed: 120 m.p.h.

OPTIONAL EXTRAS Laminated windscreen. Laminated Sundym glass rear screen. Overdrive. Wire wheels. Chrome wire wheels. Close ratio gears. Hazard warning device. Heater. Two speed wipers. Leather steering wheel. Oil temperature gauge. Servo Adjustable dampers (pair). Non-standard paint finish. Alfin aluminium brake drums (pair).

TVR 1800SE As TVR Mk. IV but equipped as standard with wire wheels, fresh air heater/demister unit, two speed screen wipers, seat belts, power assisted braking, close ratio gear box, laminated windscreen.

ENGINE High performance conversion incorporating single 45 DCOE. Weber carburettor. Power output 115 b.h.p. at 6,000 r.p.m. Fully warranted.

SPECIFICATION: TVR TUSCAN V8

BODY Two door, two seater, G.T. Coachwork in glass reinforced plastic. Curved screen. Forward hinged doors. Winding windows.

UPHOLSTERY Ambla. Separate adjustable competition type bucket seats.

GENERAL EQUIPMENT Driving mirror, ash tray, safety harness attachments, self-parking two speed wipers, electric screen washer, twin wind tone horns. Cast aluminium quarter bumpers. Tool-roll, wheel mallet and jack. Spare wheel and tyre. 12 volt battery. Fully carpeted. Padded sun visors. Hazard warning device.

LIGHTS Flush fitting sealed beam with pre-focus headlamps. Separate parking lamps and direction indicator flashers. Rear lamps, braking lamps and reflectors in trisected circular form. Number plate lamp and reversing lamp.

INSTRUMENTS Speedometer, tachometer, temperature gauge, oil pressure gauge, fuel gauge and ammeter. Warning lights for main headlamps beam, ignition and direction indicators.

CONTROLS Three spoke wood rim steering wheel (rack & pinion). All switches on central console.

Ignition lock on facia adjacent to driver's right hand. Headlamp beam selection by steering column switch with daylight flasher switch. Self cancelling direction indicator control by steering column lever. Horn button on steering wheel boss.

LUGGAGE ACCOMMODATION On flat floor section behind seats. Lidded glove compartment.

DIMENSIONS

Length	11' 6"	3,590 m.m.
Width	5' 4"	1,625 m.m.
Height (unladen)	4'	1,220 m.m.
Wheel base	7' 1½"	2,220 m.m.
Track front	4' 4½"	1,360 m.m.
Track rear	4' 5½"	1,390 m.m.
Ground clearance	5"	125 m.m.
Turning circle	32'	9.8 m.
Head room from seat cushion	2' 10½"	836 m.m.

CAPACITIES

Fuel tank	15 galls. imp.	68 litres
Engine	10 pts. imp.	5.6 litres

Gear box	5.5 pts. imp.	3.05 litres
Rear axle	3.5 pts. imp.	
Cooling system (with heater)	20 pts. imp.	

KERB WEIGHT 19 cwt.

CHASSIS Multitubular back bone constructed from steel tubing with outriggers.

ENGINE Eight cylinder, 4737 c.c. bore 101.6 m.m., stroke 72.9 m.m. Compression ratio 9.1 Aluminium alloy pistons. Push-rod operated overhead valves with hydraulic lifters. Thermostatically controlled. Electric fan. Full flow oil filter. Twin choke carburettor. Hydraulic clutch.

GEARBOX Four forward speeds and reverse. Synchromesh on all forward gears

ratios	Top	3rd	2nd	1st	Reverse
	1	1.41	1.78	2.36	2.36

Final drive Chassis mounted differential hypoid bevel spline drive shaft to wheels.

SUSPENSION Independent suspension all round

by wish bones and telescopic coil spring/damper units. Anti roll bar to front.

BRAKES. Servo assisted. Front: 10" diameter discs. Rear: Drum brakes 9" x 1½" one leading, one trailing. Pedal operates all brakes hydraulically, hand brake operates rear brakes mechanically.

WHEELS. 72 spoke wire wheels 5K x 15". 6.40 x 15" tyres.

ACCELERATION 0-60 m.p.h.: 5 secs. Max. speed 130 m.p.h.

OPTIONAL EXTRAS Laminated windscreen. Chrome wire wheels. Oil temperature gauge. Non-standard paint finish. Laminated Sundym glass rear screen. Leather steering wheel. Adjustable dampers. Alfin aluminium brake drums.

TVR TUSCAN SE As TVR Tuscan but equipped as standard with seat belts, laminated windscreen and 6.5" rims.

ENGINE High performance version incorporating single progressive four choke carburettor. Power output 271 b.h.p. at 6,000 r.p.m. Fully warranted.

Conditions of Sale TVR Engineering Limited reserve the right to vary the ex-works price of all products manufactured by them at any time, and all goods are invoiced from the factory at the ex-works price current on the day of delivery.

The manufacturer reserves the right on the sale of any vehicle to make before delivery, without notice, alterations to and departures from the specification design and equipment detailed in its various publications.