

SPECIFICATION

***NB: These denote changes from 1964 production.

ENGINE: ***

TYPE: MGB to 5 bearing crank specification.
DISPLACEMENTS: 1798 c.c. (109.6 cu. in.).
VALVE POSITION: O.H.V.
BORE: 80.26 mm (3.16 in.).
STROKE: 89 mm (3.5 in.).
MAXIMUM B.H.P.: 98 at 5400 R.P.M.
TORQUE: 110 ft. lbs. at 3000 R.P.M.
CLUTCH: 8 in. diaphragm spring.
GEARBOX: MGB four forward and one reverse.

CHASSIS: ***

FRAME: Multitubular.
SUSPENSION: Independent all round coil spring and unequal length wishbones.
DAMPERS: Telescopic.
BRAKES: Front, Girling 10 $\frac{3}{4}$ in. discs.
Rear, Girling 9 in. x 1 $\frac{3}{4}$ drums.
WHEELS: ***Dunlop 72 spoke 5K x 15 in.
TYRES: Dunlop RS5 590 x 15 in.
STEERING: ***Rubber mounted rack and pinion.
(2 $\frac{1}{2}$ turns lock to lock).
AXLE RATIO: 4.1 to 1 standard. Optional 4.3 to 1, 4.55 to 1, 4.875 to 1.

OPTIONAL EQUIPMENT:

Close ratio gears (competition type)	Balanced engine.
Oil cooler.	Radiator blind.
Cigar lighter.	Laminated screen.
Two speed wiper	Electric screen washers.
Brake booster.	Vacuum type screen washers.
Chrome luggage rack.	Fresh air heater/demister unit.
Powlock differential unit.	Oil temperature gauge.

FOR COMPETITION:

See separate list for all Competition equipment.

COLOURS:

The new Mark III 1800 "S" is available in the following range of new colours:

British Racing Green.	Regal Red.
Ambassador Blue.	Signal Red.
Cirrus White.	Powder Blue.
Charcoal.	Riviera Blue.
Sunburst Yellow.	Opalescent Silver Blue.
Opalescent Silver Grey.	Opalescent Bronze.

DIMENSIONS:

WHEEL BASE: 7 ft. 11 $\frac{1}{2}$ ins.
TRACK: ***front 4 ft. 4 $\frac{1}{2}$ ins.
rear, 4 ft. 5 $\frac{1}{2}$ ins.
OVERALL LENGTH: 11 ft. 6 ins.
OVERALL HEIGHT: 4 ft. 0 ins.
OVERALL WIDTH: 5 ft. 4 ins.
GROUND CLEARANCE: 6 ins.
KERB WEIGHT: 14 cwt. (650 kilos).

BODY: ***

CONSTRUCTION: Unstressed reinforced plastic on a multitubular frame.
DOORS: Fully lockable with winding windows.
SEATING: ***Two new type competition bucket seats – both adjustable***
STEERING WHEEL: ***15 in. fully sprung woodrim carrying company motif.
INSTRUMENTS: Separate rev-counter, trip speedometer, oil pressure, water temperature, ammeter, fuel.
FUEL TANK: ***10 imperial gallons (45.5 litres).
BATTERY: 12 volt 38 amp hour.

INTERIOR:

Vynol Red. Finish Black.
Rich Tan.

OTHER 1965 CHANGES:

New type body.	Tinted anti-dazzle rear window.
New rear lights.	New badges front/rear.
Washable headlining.	New type lower front wishbone.
Sun visors.	Both seats adjustable.
Rubber universal steering Dampers.	Felt bush in column support.

AVAILABLE: As left or right hand drive.

AVAILABLE: Complete ex. works tax paid or in Component Form.

TVR CARS

Proprietors and Manufacturers:

GRANTURA ENGINEERING LTD., BLACKPOOL, ENGLAND.

TVR Distributors for Norfolk, Suffolk and Essex:

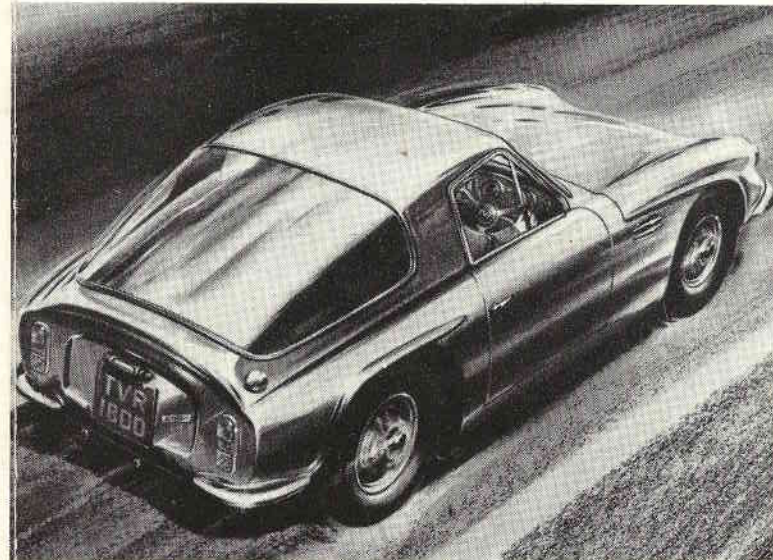
Messrs. VIKING PERFORMANCE LTD.,
GROVE ROAD, BY-PASS, WOODBRIDGE, SUFFOLK.
Woodbridge 3228.

TVR

mark III

1800

S



PRINTED BY J. H. LEEMAN LTD. NESTON, WIRRAL, CHESHIRE

DESIGNED AND PRODUCED BY LEIGHTON ADVERTISING LIVERPOOL

PROVED PERFORMANCE IMPROVED FEATURES



NEW IMPROVED SHAPE!

The first thing you will notice about the 1800 S is the new shape, aerodynamically sound and pleasing to the eye. A practical eager shape which speaks of speed even at rest.

A closer look takes in new type wheels, new wood-rim steering wheel, tinted anti-dazzle rear window and new adjustable competition bucket seats. Look further, sun visors, washable headlining and greater luggage accommodation. All this when coupled with many other important detail technical improvements provides yet again an unequalled TVR quality.

- 4 Wheel independent suspension
- Multitubular chassis
- MGB 1800 5 bearing crank power unit
- Speeds up to 120 m.p.h.
- Unstressed reinforced plastic body
- Luxurious interior finish
- World wide spares service

