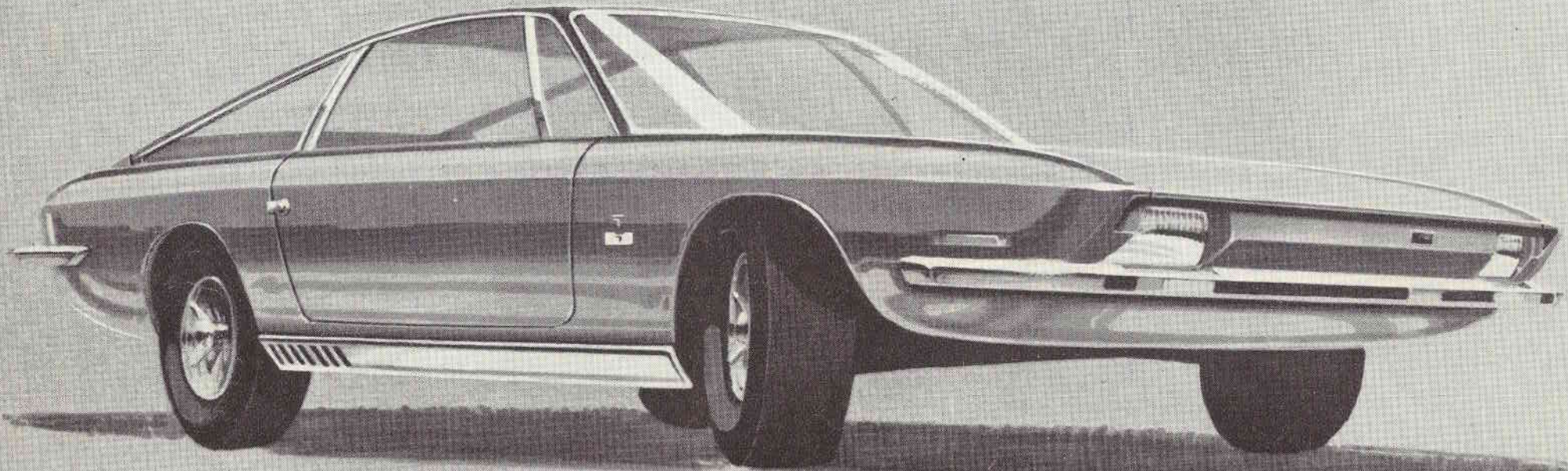


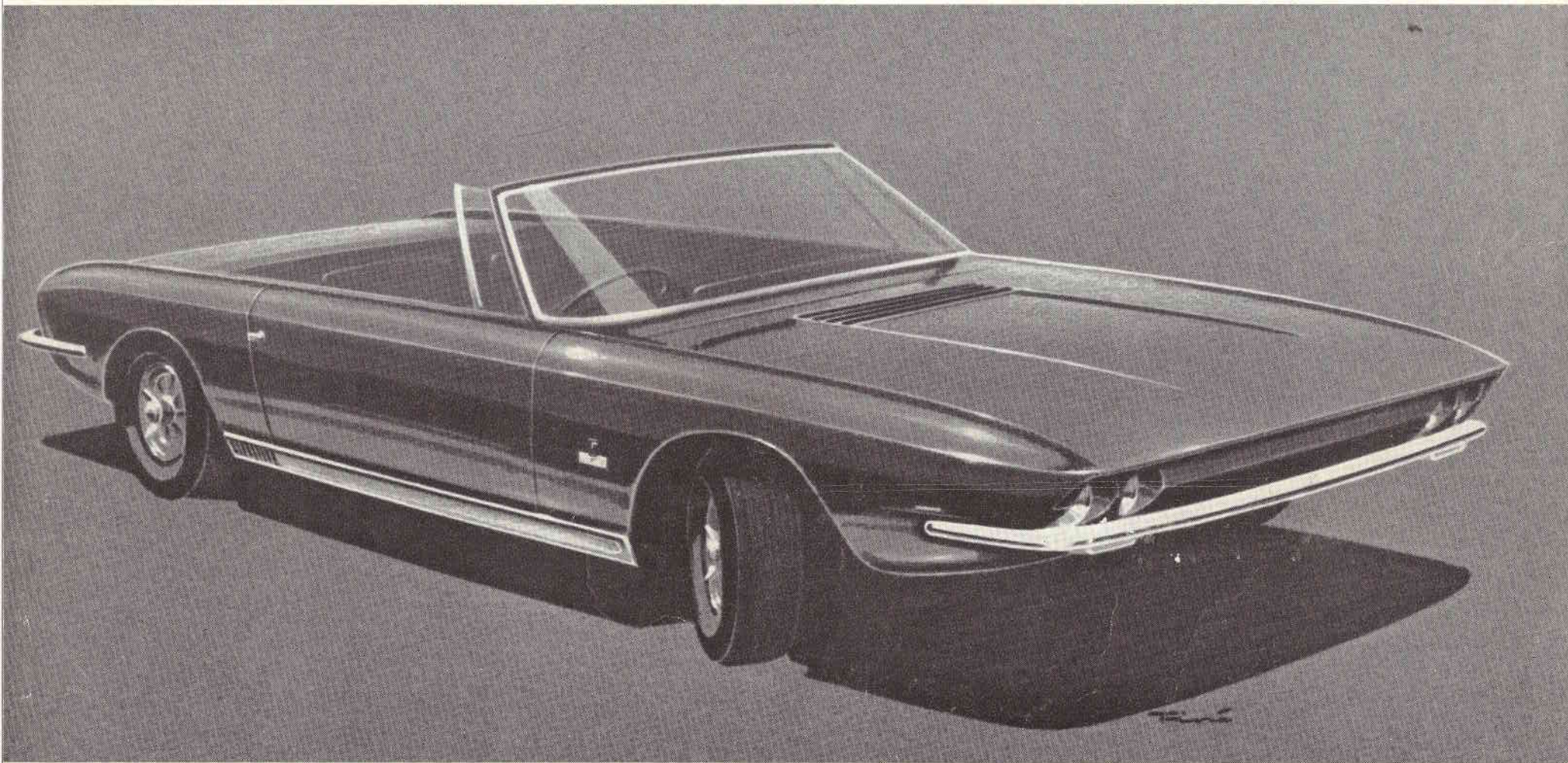
Sparkling new twins from **TVR**

The TINA COUPE 2 + 2 seater, designed by Fiore, combines the latest ideas and techniques of Italian styling with the proven reliability and ease of servicing of the Sumbeam Imp Sport. The aerodynamic body gives a top speed of over 100 m.p.h., petrol consumption 37-42 m.p.g. See over—→



Sparkling new twins from **TVR**

The TINA SPYDER 2 + 2 seater drophead, designed by Fiore, is based on the Sunbeam Imp Sport chassis, suspension, engine and transmission, no modifications being necessary to the well proven Rootes components. Maximum speed is over 100 m.p.h., petrol consumption 37-42 m.p.g. See over—→



TVR ENGINEERING LIMITED . HOO HILL WORKS . LAYTON . BLACKPOOL . Telephone Blackpool 33241